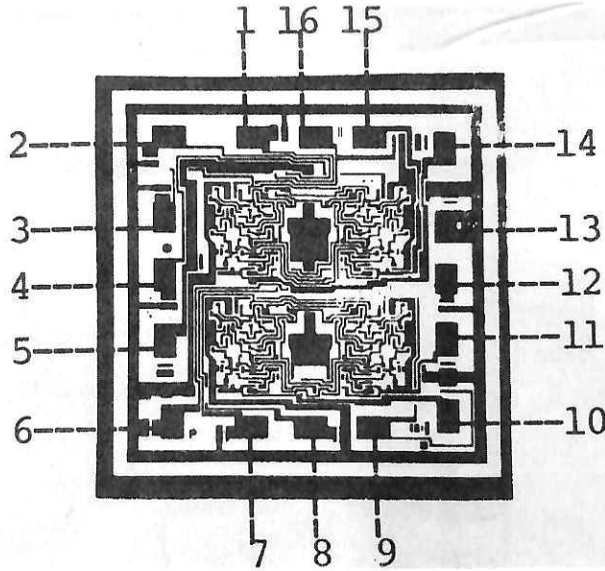




# Sierra Components, Inc.

2222 Park Place, 3-E • Minden, Nevada 89423

Phone: 775.783.4940 Fax: 775.783.4947



PAD	FUNCTION
1	1CLK
2	1PRE
3	1CLR
4	1J
5	V <sub>CC</sub>
6	2CLK
7	2PRE
8	2CLR
9	2J
10	2Q
11	2Q
12	2K
13	GND
14	1Q
15	1Q
16	1K

**NOTE**

- This data is supplied for general information only and is believed to be correct at the time of publication.
- For critical applications, the customer is advised to verify device revision and pad

DEVICE	54LS76	DIE SIZE (MILS)	65 X 65
MANUFACTURER	SIG	BOND PADS MIN (MILS)	4 X 4
APPROVED BY	GEW	TOP METAL	Al
DATE	22/09/20	BACK METAL	Si
SERIAL NUMBER	0835	BACK POTENTIAL	GND OR FLOAT

**APPROVED BY: MG**

**DIE SIZE: 65 x 65 Mils**

**DATE: 9/24/20**

**MFG: Signetics**

**THICKNESS:**

**P/N: 54LS76**